

MASTERMESH EXPANDED METALS



MASTERMESH INDUSTRIES

COMPANY PROFILE

MASTERMESH INDUSTRIES

A division of the Graham Group

An Australian owned company
with over 50 years' experience

The Graham Group is now owned by the Nepean Group, which is Australia's leading privately owned, diversified engineering and industrial manufacturing conglomerate.

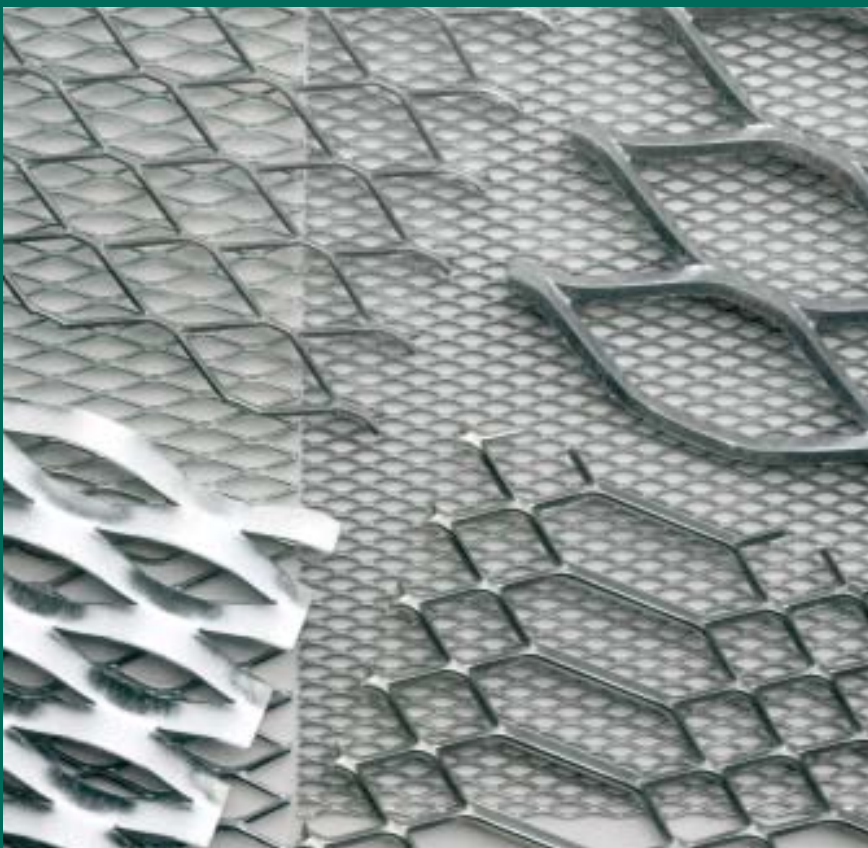
Mastermesh Industries manufactures and supplies an extensive range of expanded and perforated metal products that are widely used in architectural, commercial, industrial and resources projects Australia-wide.

Materials include galvanised mild steel, stainless steel and aluminium.

This brochure is designed to assist the architect, draughtsperson, engineer, fabricator and specifier in the correct selection of our range of expanded metal products.

CONTENTS

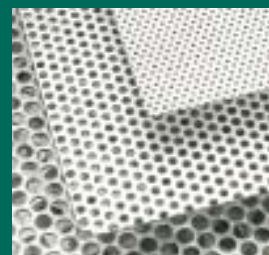
Company Profile	2
General Information	3
Applications/Edge Trims	4-5
Flormesh®	6-7
Small/Large Diamond	8-9
Security Mesh	10-11
Decorative Mesh	10-11
Sunscreen Mesh	10-11



Expanded Metal



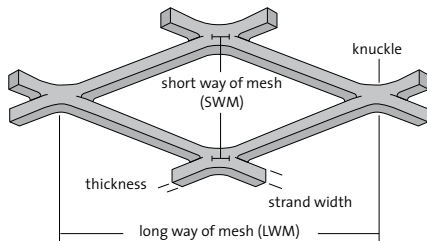
Flormesh®



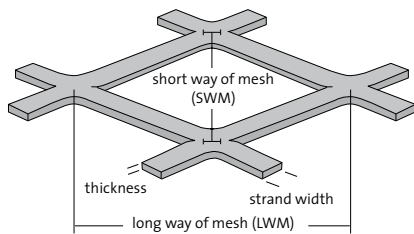
Perforated Metal

GENERAL INFORMATION

Raised Expanded Metal Profile



Flattened Expanded Metal Profile



General Tolerances

All measurements specified are nominal approximates only. Although every effort is made to ensure these figures are accurate, they are subject to standard manufacturing tolerances.

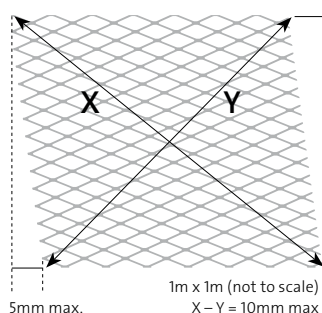
Camber (bow in sheet)

5mm per metre of length (7mm for flattened finish).

Out of Square

5mm per metre of length, or 10mm per square metre on diagonals.

Because of the production process, expanded metal is not completely square as manufactured. If perfectly square sheets are required, sheets must be sheared on all sides.



Expanded Metal Terms

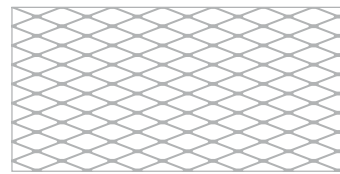
LWM – Long Way Measurement. Dimension taken from the centre of one knuckle to the centre of the adjoining knuckle, measured along the “long way” of the diamond/profile (see diagrams).

SWM – Short Way Measurement. Dimension taken from the centre of one knuckle to the centre of the adjoining knuckle, measured along the “short way” of the diamond/profile (see diagrams).

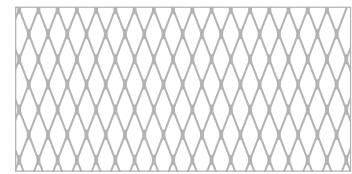
Strands & Knuckles – Expanded metal is made up of strands & knuckles. Strands form the sides of the expanded metal opening and the knuckle is the intersection of two strands.

Thickness – The thickness of the parent sheet metal, which remains unchanged during the expanding process.

Sheet Direction – LWM x SWM (see diagrams below).



2400 LWM x 1200 SWM
This sheet is 2400mm LWM x 1200mm SWM



1200 LWM x 2400 SWM
This sheet is 1200mm LWM x 2400mm SWM

Non-standard Products

Mastermesh has provided many special-purpose expanded metals to suit unique applications. If you have a requirement that is not covered in this catalogue, please contact your nearest sales office (details on back cover) for further information.



Materials

Expanded metal sheets can be supplied in the following materials:

- >> Untreated mild steel
- >> Pre-galvanised steel
- >> Stainless steel (304 & 316)
- >> Aluminium
- >> Copper
- >> Brass
- >> Pre-painted steel

Finishes

- >> Untreated mild steel
- >> Hot-dip galvanised (conforms to AS/NZS4680:1999)

MASTERMESH EXPANDED METAL APPLICATIONS



FM14 – Walkway/Catwalks



Non-standard product – Carpark facades



DM3032 – Decorative window grilles



SM3030 – Gross pollutant traps



LD1620F – Machine guards



LD3045 – Balustrade infill panels

MASTERMESH EXPANDED METAL APPLICATIONS & EDGE TRIMS



SM3056 – Security window grilles

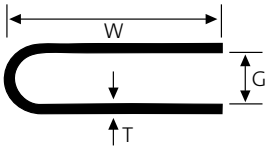


SUN1663G – Sunshades for common areas

Steel Edge Trims – SETs

Mastermesh Industries Steel Edge Trims (SETs) provide an alternative to conventional methods of framing and installation. The use of SETs provides a smooth continuous frame, removing the danger of sharp serrated edges from cutting and fabrication.

Product Code	Standard Length	Width "W"	Gap "G"	Thickness "T"	Approx. Wt (Kg) /Length
SET2	3000	12	2	1.0	0.61
SET4	3000	19	4	1.2	1.22
SET6	3000	25	6	1.6	2.00
SET8	3000	25	8	1.6	2.20
SET10	3000	25	10	1.6	2.30



Steel Edge Trim (SET6) on Large Diamond Mesh (LD3039)



Steel Edge Trim (SET6) on Large Diamond Mesh (LD3039)



FLORMESH® WALKWAY MESH

FM14



FM19



FM22



FM28



Profiles pictured are 75% actual size.



Trailers



Air conditioning platforms



Walkways

FLORMESH® WALKWAY MESH

Flormesh® Product Range

Product Code	Material	Nom. Mesh Dimensions		Nom. Strand Dimensions		Sheet Size LWM x SWM	Approx. Weight (kg/m ²)	Approx. % Open Area
		LWM (mm)	SWM (mm)	Thickness (mm)	Width (mm)			
FM14	Steel	135.00	45.00	5.00	8.00	600/750/900/1200 x 3000	14.00	64
FM19	Steel	135.00	45.00	5.00	11.00	600/750/900/1200 x 3000	19.00	52
FM22	Steel	75.00	30.00	5.00	7.50	600/750/900/1200 x 3000	22.00	50
FM28	Steel	75.00	30.00	5.00	10.50	600/750/900/1200 x 3000	28.00	30

• Open area percentages are approximations only

Flormesh® Safe Loads and Deflections

Product Code Loading Type

FM 14

Span (mm)	500	600	700	800	900	1000	1100	1200
Uniform (kPa)	18.49	13.63	10.16	7.67	5.63	4.09	2.67	1.70
Deflection (kPa)	1.24	0.97	0.78	0.64	0.52	0.44	0.37	0.31
Concentrated (kN)	1.89	1.65	1.44	1.21	0.99	0.77	0.55	0.33

FM 19

Span (mm)	500	600	700	800	900	1000	1100	1200
Uniform (kPa)	29.51	21.63	16.00	11.89	8.49	6.04	3.88	2.07
Deflection (kPa)	1.60	1.27	1.04	0.87	0.73	0.63	0.53	0.46
Concentrated (kN)	3.41	2.97	2.51	2.08	1.62	1.18	0.72	0.41

FM 22

Span (mm)	500	600	700	800	900	1000	1100	1200
Uniform (kPa)	25.50	18.54	12.32	9.69	6.81	3.63	2.61	0.94
Deflection (kPa)	1.55	1.22	0.99	0.81	0.68	0.57	0.48	0.41
Concentrated (kN)	2.41	2.16	1.92	1.67	1.46	1.18	0.88	0.70

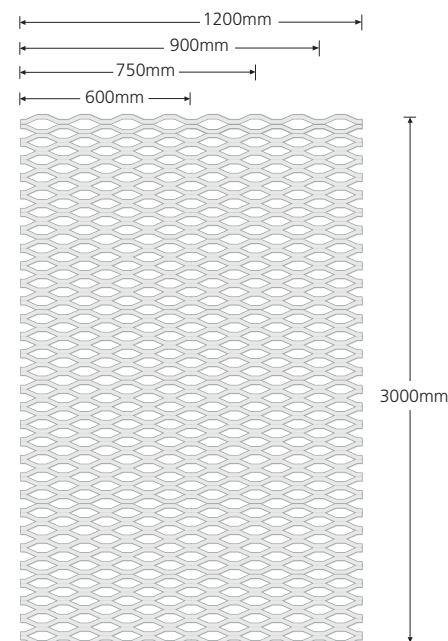
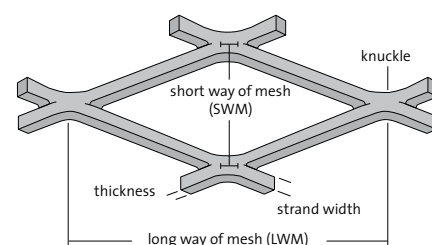
FM 28

Span (mm)	500	600	700	800	900	1000	1100	1200
Uniform (kPa)	27.75	20.83	15.89	11.41	9.17	6.88	5.00	3.44
Deflection (kPa)	2.05	1.60	1.29	1.05	0.88	0.73	0.60	0.51
Concentrated (kN)	4.45	3.95	3.42	2.91	2.41	1.90	1.35	0.90

Notes

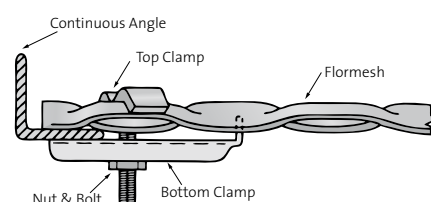
1. The above tables are based on the XPM Expanded Metal Industry Standard 1001.
2. Load capacities given in the table are for Flormesh® spanning the LWM direction over a clear span with every fourth strand welded to the support and a minimum landing of 25mm (preferred industry standard).
3. Uniform distributed load is the maximum load just prior to permanent deflection (yield) of mesh. Permanent yield is span/500 or 0.80mm, whichever is greater.

4. Deflections in the tables refer to uniform distributed loads causing a deflection of 10mm or span/360, whichever is less.
5. Concentrated loads were applied through a 100mm diameter plate. They correspond to a localised deflection of 10mm.
6. For large simple spans the load carrying capacity is generally governed by deflection; for double and triple spans by uniform or concentrated loads.
7. A load of 102kg approximates to 1kN. A load of 102 kg/m² approximates to 1 kPa.



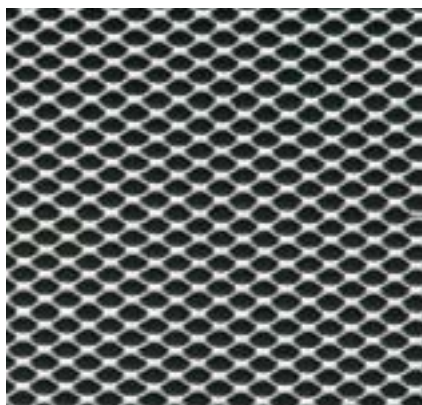
Fixing

Weld to support steel or clamp as shown below.



MASTERMESH EXPANDED METAL STOCK SHEETS

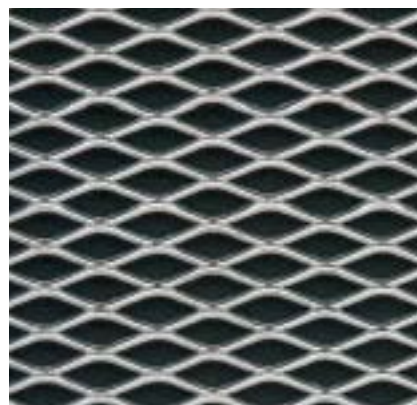
SD0608



SD0916



SD0912



Small Diamond Range

Product Code	Material	Nom. Mesh Dimensions		Nom. Strand Dimensions		Sheet Size LWM x SWM	Approx. Wt (kg/m ²)	Approx. % Open Area
		LWM	SWM	Thickness	Strand Width			
SD0608	Steel	6.00	3.50	0.60	0.76	1200 x 1200	2.02	57
SD0916	Steel	10.00	5.50	0.90	1.55	1200 x 1200	4.10	44
SD0912	Steel	15.00	5.50	0.90	1.17	1200 x 1200	3.00	58

Large Diamond Range

LD1616	Steel	28.00	9.00	1.60	1.60	1200 x 2400	4.40	65
LD1620	Steel	38.00	15.00	1.60	2.00	1200 x 2400	3.30	73
LD1621	Steel	50.00	19.00	1.60	2.10	1200 x 2400	2.30	77
LD3039	Steel	50.00	19.00	3.00	3.90	1200 x 2400	8.30	59
LD2028	Steel	60.00	25.00	2.00	2.80	1200 x 2400	3.50	77
LD3045	Steel	76.00	38.00	3.00	4.50	2400 x 1200	6.70	76
LD3056	Steel	102.00	50.00	3.00	5.60	2400 x 1200	5.70	77

Most of the above meshes can be supplied flattened (F). • Non-standard sheet sizes are available. Conditions apply.

• If you have a requirement not covered in this brochure, contact your nearest sales office (details on back cover) for assistance.

• Open area percentages are approximations only

LD1616



LD1620



LD1621

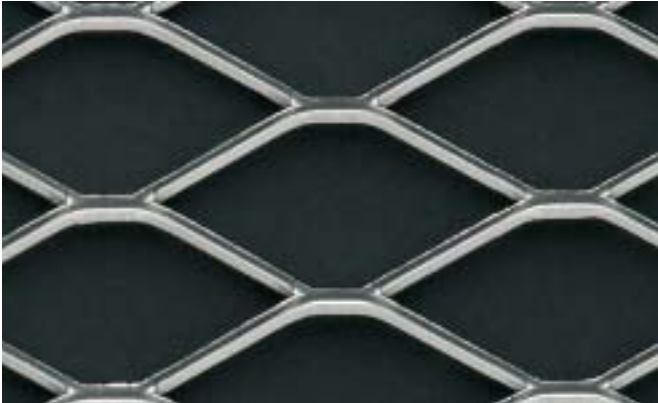


MASTERMESH EXPANDED METAL STOCK SHEETS

LD3039



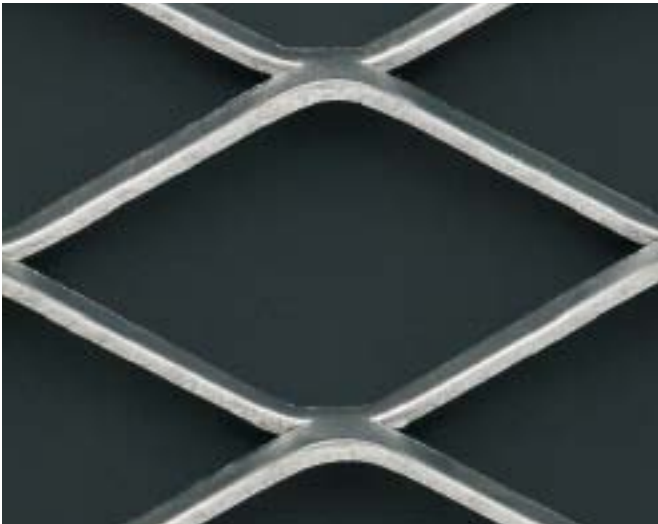
LD2028



LD3045



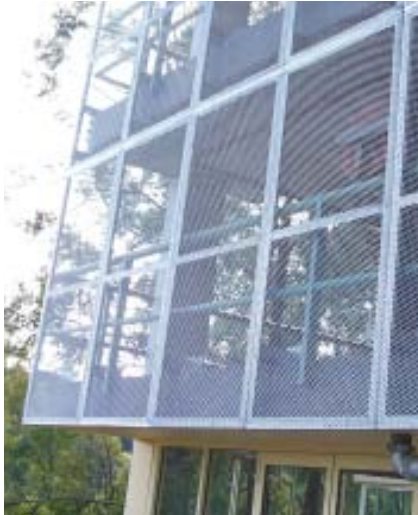
LD3056



SD0912 – Automotive grilles



LD1621F – Air filters



LD3039 – Car park facades



MASTERMESH EXPANDED METAL STOCK SHEETS

Security Mesh

Product Code	Material	Nom. Mesh Dimensions		Nom. Strand Dimensions		Sheet Size LWM x SWM	Approx. Wt (kg/m ²)	Approx. % Open Area
		LWM	SWM	Thickness	Strand Width			
SM3030	STEEL	19.00	12.00	3.00	3.00	1200 x 2400	12.00	50
SM3056	STEEL	102.00	50.00	3.00	5.60	1800 x 750	5.70	77
SM3056	STEEL	102.00	50.00	3.00	5.60	2000 x 800	5.70	77
SM3056	STEEL	102.00	50.00	3.00	5.60	2000 x 1100	5.70	77

Decorative Mesh

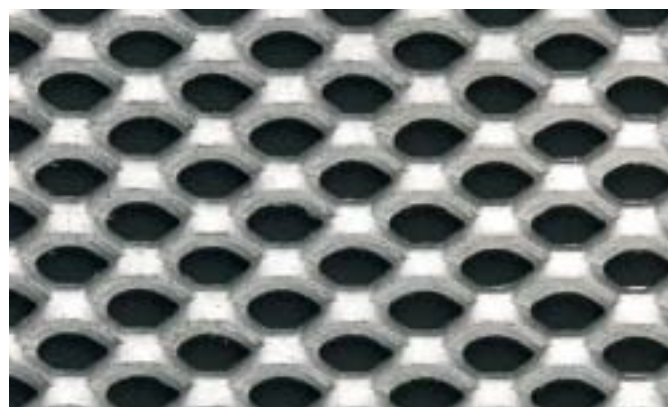
DM3032	STEEL	102.00	25.00	3.00	3.20	2400 x 1200	5.40	74
--------	-------	--------	-------	------	------	-------------	------	----

Sunscreen Mesh

SUN1663	STEEL	76.00	16.00	1.60	6.30	2400 x 1200	11.08	22
SUN1611	STEEL	75.00	30.00	1.60	10.50	2400 x 1200	9.68	30

- Non-standard sheet sizes are available. Conditions apply.
- If you have a requirement not covered in this brochure, contact your nearest sales office (details on back cover) for assistance.
- Open area percentages are approximations only

SM3030



SM3056



SM3030 – Security doors



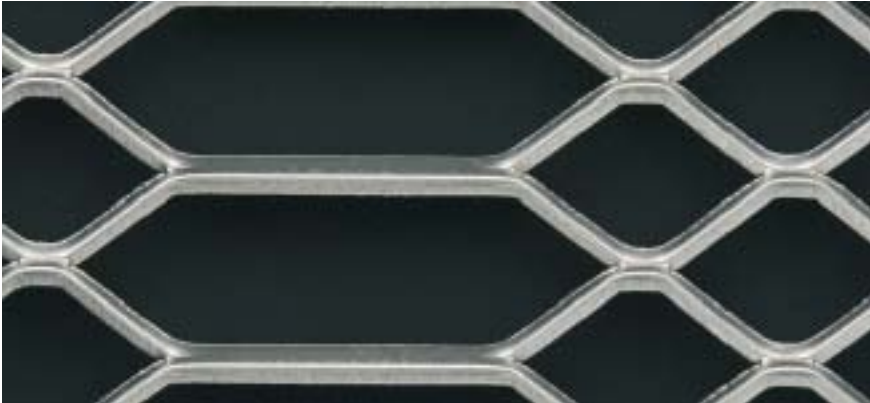
SM3030 – Security gates



SM3056 – Security window/door grilles

MASTERMESH EXPANDED METAL STOCK SHEETS

DM3032



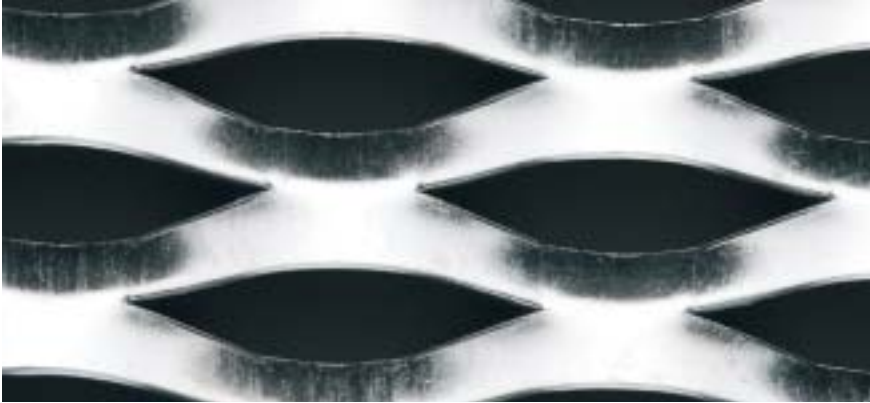
DM3032 – Balustrade infill panels

SUN1663



SUN1663 – Anti-glare screens

SUN1611



SUN1611 – Car park screens

Information contained in this brochure is supplied in good faith and with the view to assist the user in the correct selection of our products. While every care is taken to ensure that the information contained in this brochure is correct, no warranty is made nor is any condition expressed or implied. As the use of products sold is beyond our control, a condition of purchase is that the purchaser accepts responsibility for ensuring that products purchased are suitable for the intended use.





MASTERMESH INDUSTRIES PTY LTD

A division of the Graham Group
ABN 42 000 240 853

NEW SOUTH WALES

117 – 153 Rookwood Rd, Yagoona 2199
Telephone 61 (2) 9707 5000 Facsimile 61 (2) 9790 1013

VICTORIA

171 Derrimut Drive, Derrimut VIC 3030
Telephone 61 (3) 9394 1001 Facsimile 61 (3) 9394 1441

WESTERN AUSTRALIA

98 Campbell Street, Belmont WA 6104
Telephone 61 (8) 9478 1266 Facsimile 61 (8) 9277 7742

QUEENSLAND

53-59 Sodium Street, Narangba QLD 4504
Telephone 61 (7) 3491 4500 Facsimile 61 (7) 3888 2722

The Australian-owned Graham Group of companies manufactures a wide range of steel and galvanised products.

- **Galintel**
Galvanised steel lintel bars
- **Weldlok**
Grating, handrail and drainage products
- **Mastermesh**
Expanded and perforated metals
- **Galvanising Services**
Hot-dip galvanising
- **Graham Rolling Mills**
Hot-rolled and heavy-gauge coil slitting

mastermesh@grahamgroup.com.au
www.mastermesh.com.au

a member of

